

WOLFIN

WOLFIN IB

SINGLE-PLY, HIGH-POLYMER, ENTIRELY HOMOGENEOUS SYNTHETIC ROOFING AND WATERPROOFING MEMBRANE. THE MEMBRANE IS PRODUCED BY EXTRUSION METHOD.

TYPES AND APPLICATION AREAS

Wolfin IB	Single-ply, homogenous membrane (no different top, middle and under layer).
Membrane width	1,620 mm
Nominal thickness	1.5 mm
Colour	Black, grey

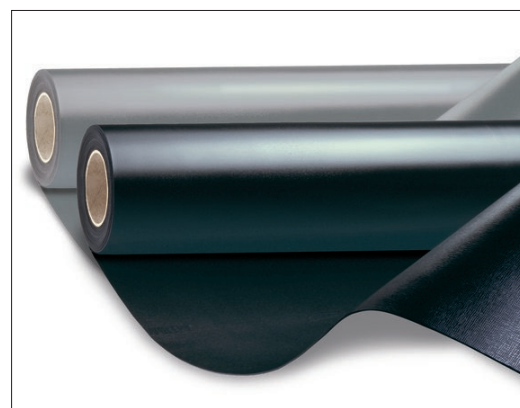
New buildings and refurbishments	<ul style="list-style-type: none">• Waterproofing of buildings• Loose-laid under ballast• Wolfin/PYE composite system• Special application: Sealant for use in sealing constructions in plants for storage, filling and handling water-polluting substances (general building supervision approval)
---	--

Wolfin IB is certified, approved and classified according to	<ul style="list-style-type: none">• EN 13956 (CE-certificate N° 1213-CPR-012)• EN 13967 (CE-certificate N° 1213-CPR-015)• Fulfils all German requirements (DIN standards) for waterproofing of roofs• Fulfils UK requirements according to BBA (certificate 14/5143)	<ul style="list-style-type: none">• EN 13501-1 (class E)• EN 13948 / FLL• AS 4654.1-2012 (NATA Certified)• AS 4858 (NATA Certified)• EN 13967:2012 for waterproofing, including basement tanking
---	---	--

Characteristics of Wolfin IB	<ul style="list-style-type: none">• Content of high polymer substances more than 94%• More than 55 years of practical experience• Permeable to water vapour diffusion• My-value $\leq 10,000$ (+/- 3,000)• Free of toxic heavy metals• Free of flame retardants• Ozone and UV resistant• Suitable for hot-air and solvent welding throughout its lifetime• Chemical resistance to all insulation material• Resistant to plant roots and rhizomes according to FLL test method	<ul style="list-style-type: none">• Unique chemical resistance :<ul style="list-style-type: none">• Resistant to bitumen, flux oils, mineral oils, fatty acid, kerosene• General building supervision approval for sealants for use in sealing constructions in plants for storage, filling and handling water-polluting substances (LAU plants / WHG)*• Proof of the resistance to sulphurous acid and lactic acid (85%)
-------------------------------------	---	---

System parts and accessories	<ul style="list-style-type: none">• Internal and external corners• Coated metal profiles	<ul style="list-style-type: none">• Stainless-steel drainage and elements• System adhesives (Teroson AD 914, Teroson AD Adhesive Spray)
-------------------------------------	---	--

* WHG = Wasserhaushaltsgesetz (German water resource act)



TECHNICAL DATA

Product information according to

EN 13956

- Under ballast (gravel, green roof, traffic areas or similar ...)

EN 13967

- Damp-proof sheets
- Basement tanking sheets

Characteristic	Testing standard	Unit	Result* 1.5mm
Visible defects	EN 1850-2	-	passed
Length	EN 1848-2	m	15
Width	EN 1848-2	m	1.10 / 1.62
Straightness	EN 1848-2	mm	≤ 50
Flatness	EN 1848-2	mm	≤ 10
Mass per unit area	EN 1849-2	kg/m ²	1.9
Effective thickness	EN 1849-2	mm	1.5
Watertightness	EN 1928 Method B	kPa	≥ 400
External fire performance	EN 13501-1	-	Class E
Joint peel resistance	EN 12316-2	N/50 mm	≥ 150
Joint shear resistance	EN 12317-2	N/50 mm	≥ 600
Tensile strength longitudinal and transversal	EN 12311-2	N/50 mm	≥ 16
Elongation longitudinal and transversal	EN 12311-2	%	≥ 300
Resistance to impact Method A Method B	EN 12691 EN 12691	mm mm	≥ 600 ≥ 600
Resistance to static load	EN 12730 Method A	kg	≥ 20
Durability of watertightness against ageing	EN 1296 EN 1928	-	passed
Durability of watertightness against chemicals	EN 1847 EN 1928	-	passed
Resistance to nail tear	EN 12310-1	N	≥ 250
Tear resistance longitudinal and transversal	EN 12310-2	N	≥ 100
Resistance to root penetration	EN 13948	-	passed
Dimensional stability longitudinal and transversal	EN 1107-2	%	≤ 1.5
Foldability at low temperature	EN 495-5	°C	≤ -25
UV exposure	EN 1297	visual	passed
Water vapour permeability	EN 1931	μ	10,000 ± 3,000
Bitumen compatibility (90 days / 70°C)	EN 1548	-	passed

* Values in new condition

SUSTAINABILITY INFORMATION WOLFIN IB

EPD declaration number

EPD-BMI-2020-0174-IBB1-DE, specific EPD Wolfin IB

Wolfin IB declaration data is stored with the IBU, in the oekobaudat database and in the DGNB Navigator.
Wolfin IB membranes are, among other things, suitable for certified buildings in accordance with DGNB, BNB and Leed v4.



Manufacturer declarations

- REACH: Product does not contain any substances that meet the REACH criteria for substances of very high concern
- Heavy metals Lead, cadmium and organotin compounds: < 0.1 % (DGNB ENV 1.2 quality level 1-4 /BNB 1.1.1-1.1.5 quality level 1-5)
- SVHC phthalates (plasticisers): < 0.1 % (DGNB quality level 1-4)
- SVHC: Product contains no substances of very high concern (BNB 1.1.1-1.1.5 quality level 1-5)
- VOC content: < 0.1 %

Recycling

- Wolfin IB membranes can be thermally recycled.

Date: 03/2021. This technical data sheet was produced according to the latest technical knowledge and standards. Technical changes due to further developments are possible.



PROJEX GROUP PTY LTD
ACN 003 859 916
PO Box 98 Matraville NSW 2036
PH: (02) 8336 1666
e-mail: mail@projex.com.au website: www.projex.com.au