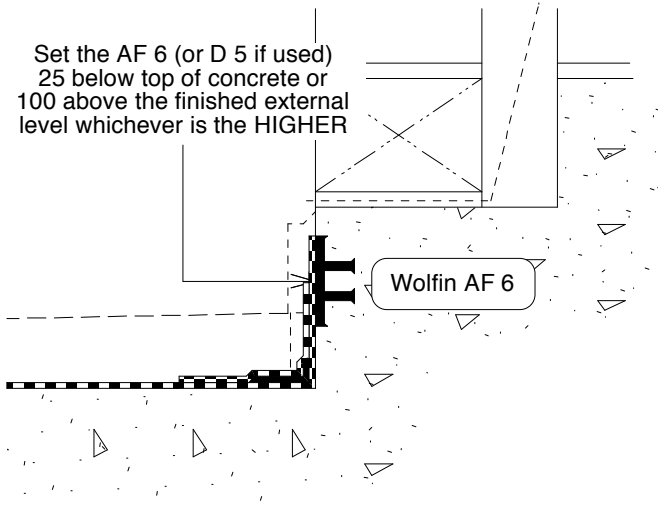


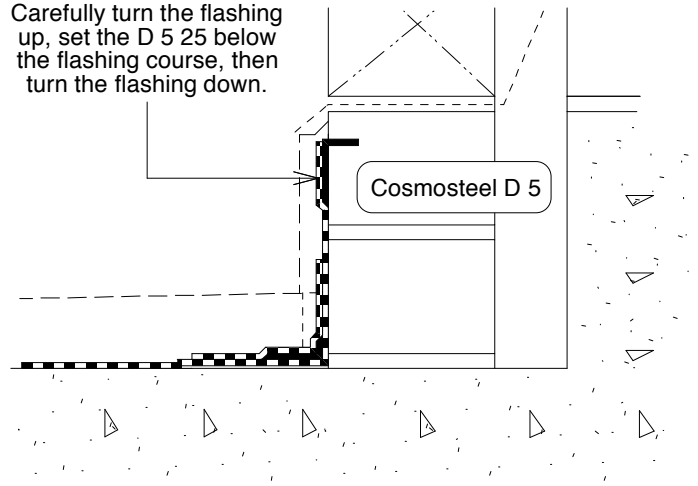
Set the AF 6 (or D 5 if used)  
25 below top of concrete or  
100 above the finished external  
level whichever is the HIGHER



TYPICAL at CONCRETE SETDOWN or HOB

DETAIL SD - 2.01

Carefully turn the flashing  
up, set the D 5 25 below  
the flashing course, then  
turn the flashing down.



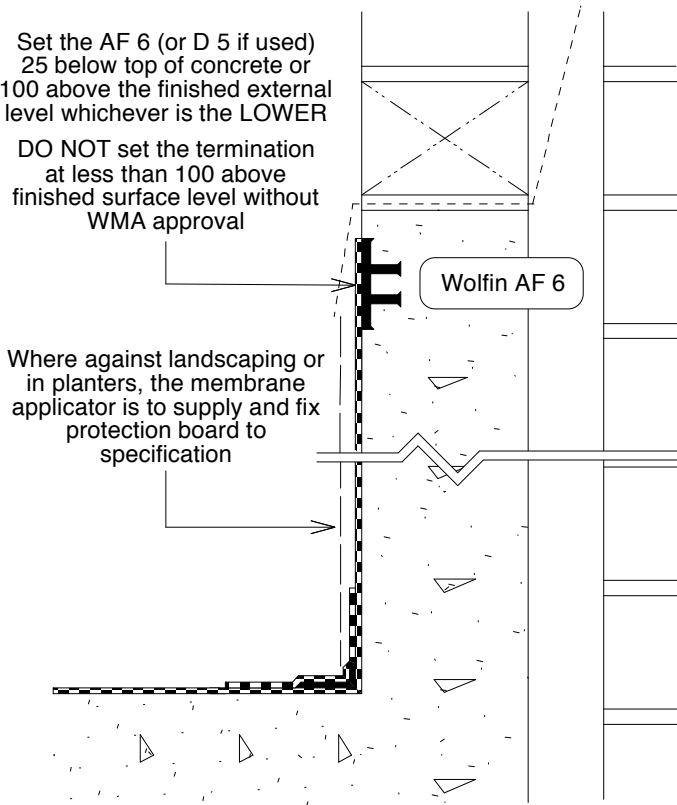
TYPICAL at MASONRY SETDOWN

DETAIL SD - 2.02

Set the AF 6 (or D 5 if used)  
25 below top of concrete or  
100 above the finished external  
level whichever is the LOWER

DO NOT set the termination  
at less than 100 above  
finished surface level without  
WMA approval

Where against landscaping or  
in planters, the membrane  
applicator is to supply and fix  
protection board to  
specification



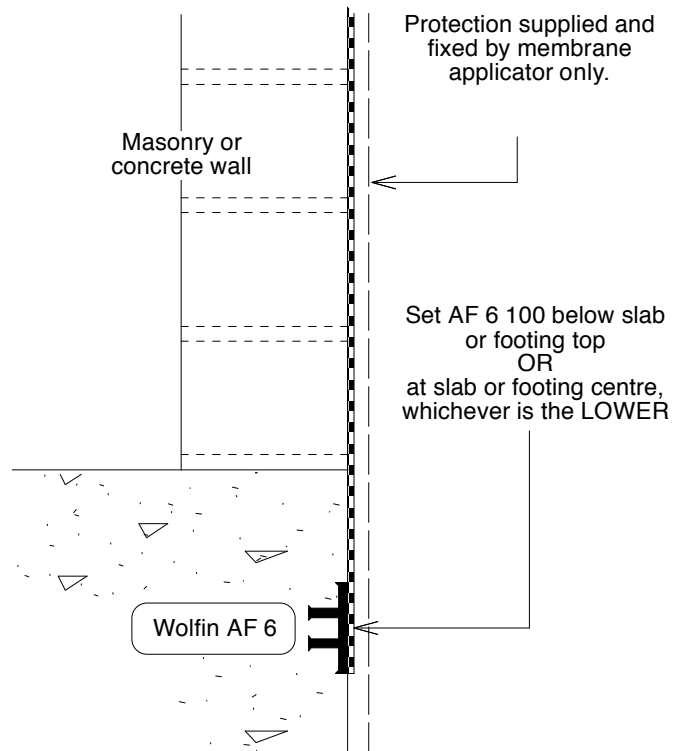
TYPICAL at CONCRETE PARAPET UPSTAND

DETAIL SD - 2.03

Protection supplied and  
fixed by membrane  
applicator only.

Masonry or  
concrete wall

Set AF 6 100 below slab  
or footing top  
OR  
at slab or footing centre,  
whichever is the LOWER



TYPICAL at RETAINING WALL BASE  
Applies either to footing or to slab edge

DETAIL SD - 2.04

This drawing is intended to show basic principles and set  
minimum standards.  
The thickness scale on this drawing is exaggerated for clarity.

COMMENTS / ASSOCIATED DRAWINGS  
1. Profile Construction details: refer dwg WSD - 1 & 4.

© PROJEX GROUP PTY LTD

Standard Guide Details

Typical Terminations  
Concrete Decks & R / walls  
Details SD 2.01 to 2.04

Scale: 1: 5

Date: APRIL 2006

Dwg No: **SD - 2**